

A world map is visible in the background, rendered in a lighter blue color against the darker blue background. The map shows the continents of North America, South America, Europe, Africa, and Asia.

“Where can I get one wireless network for data and voice; the backbone for my Smart Grid?”

Simon Noon, Business Development Manager - Utilities

November 2010



utilities.taitradio.com

Presentation overview

Social & Economic drivers for utilities

Tait Value proposition

Tait Utility solutions

- Distribution Automation
- Network Management System
- Secure networks
- Workforce communications



Social & Economic drivers for utilities

- Increase reliability - network/assets
- Reduce carbon footprint
- Security / privacy / terrorism protection
- Support distributed & intermittent generation
- Cater for energy storage
- Support electric vehicles
- Support micro-grids
- Improve cost management
- Improve worker safety



New Grid/Network thinking aims to achieve these

Tait - Value proposition for utilities

- Tait offers utilities practical wireless communications solutions that support key outcomes:
 - Improve Grid reliability
 - Enhance worker efficiency
 - Improve Grid safety - workforce & general public
- Enhanced efficiency & operational cost management improvement
- Design, deploy & support services - that allow Utilities to concentrate on their core business
- We've been providing utilities with communications solutions for over 40 years

Tait - Outlook for utility solutions

Distribution Automation

- Increase reliability (improve system & customer interruption indexes); Network Management Services; Wimax & PMR carriers (depends on latency, capacity & autonomy requirements)

Network Management System (NMS)

- SNMP-based NMS; Reporting & diagnostic tools; One system for all networks; OTAP & OTAR

Secure communications solution

- Compliance with NERC, FERC, NIST 800-53 & ISO27000; Privacy support; Authentication & access control; Encryption & NMS; Software management services; Security assessment services, OTAR, Key Management Facility (KMF)

Workforce communication solution

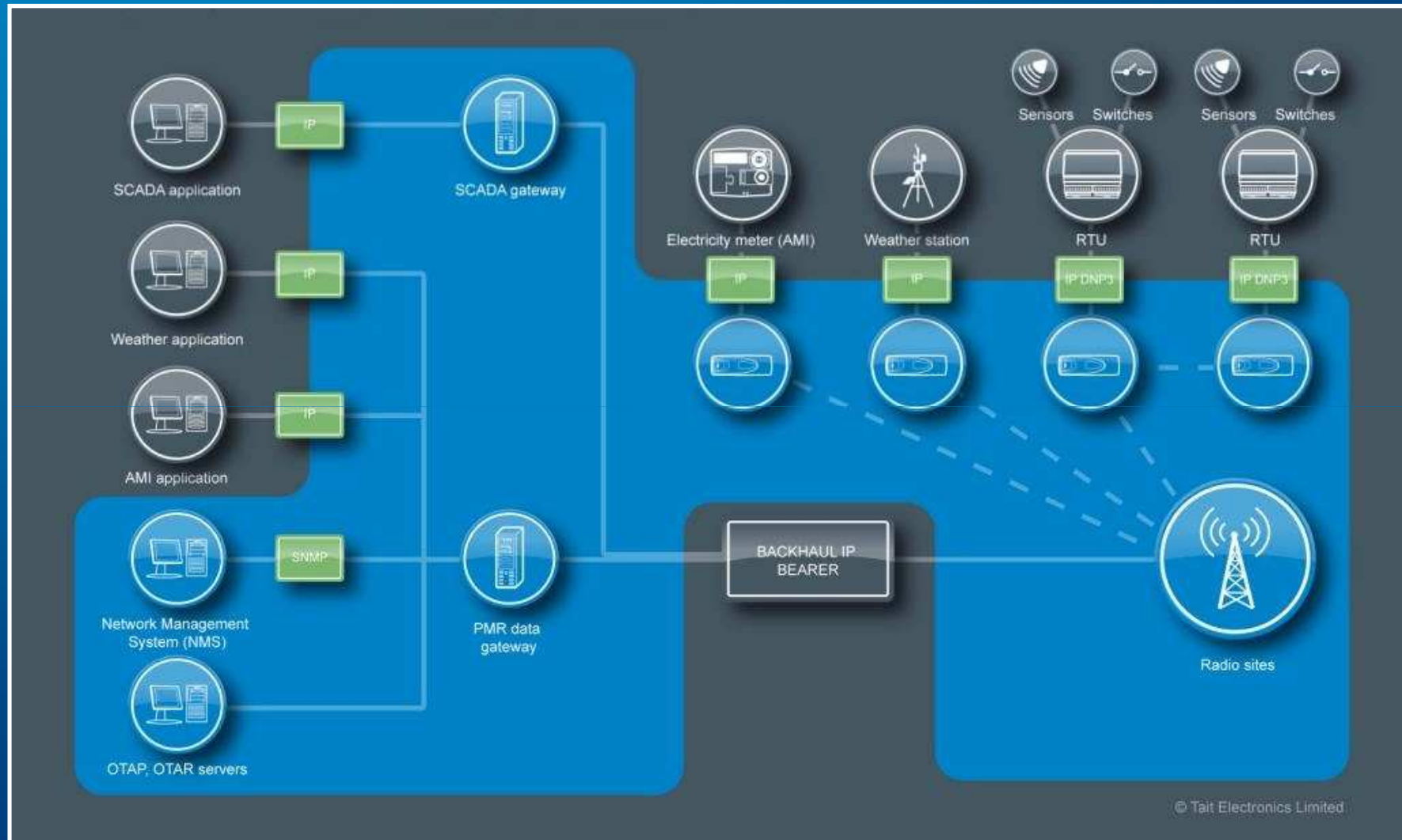
- Combined voice & data network; Workforce Management (WFM) & Automatic Vehicle Location (AVL) applications; Design, deploy & support services

Distribution Automation

- PMR data communication solution based on DMR & P25 networks
- Optimised implementation of SCADA protocols IEC101 & 104, DNP3
- End-to-end IP communications
- Support of high-level encryption & authentication



Tait - PMR Distribution Automation solution



Tait - Network Management System

SNMP-based manager

Monitors & controls the whole network:

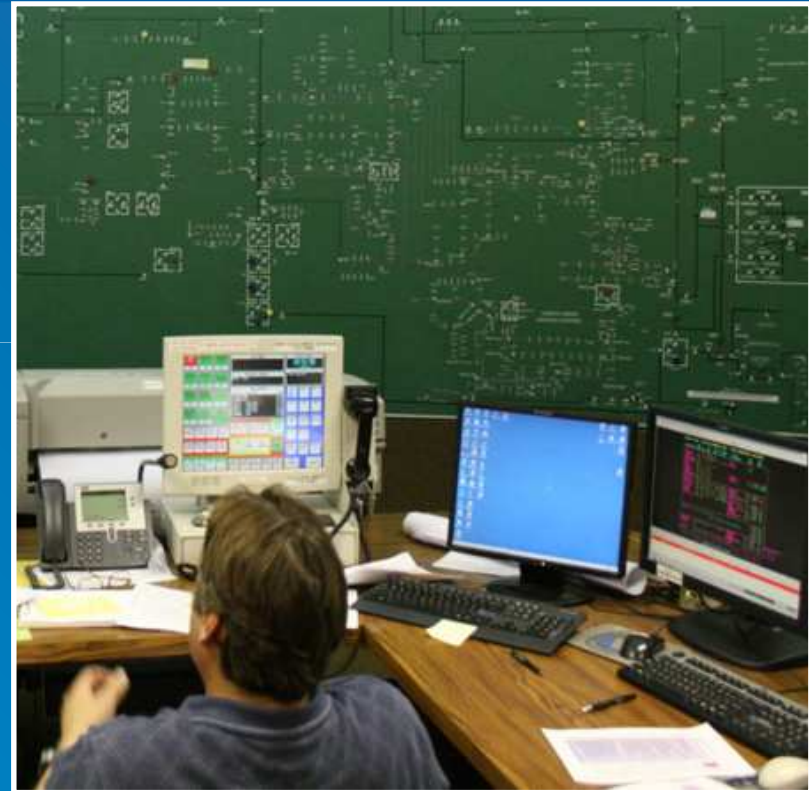
- Base station
- Terminals
- Third-party equipment

Extensive fault-finding mechanisms

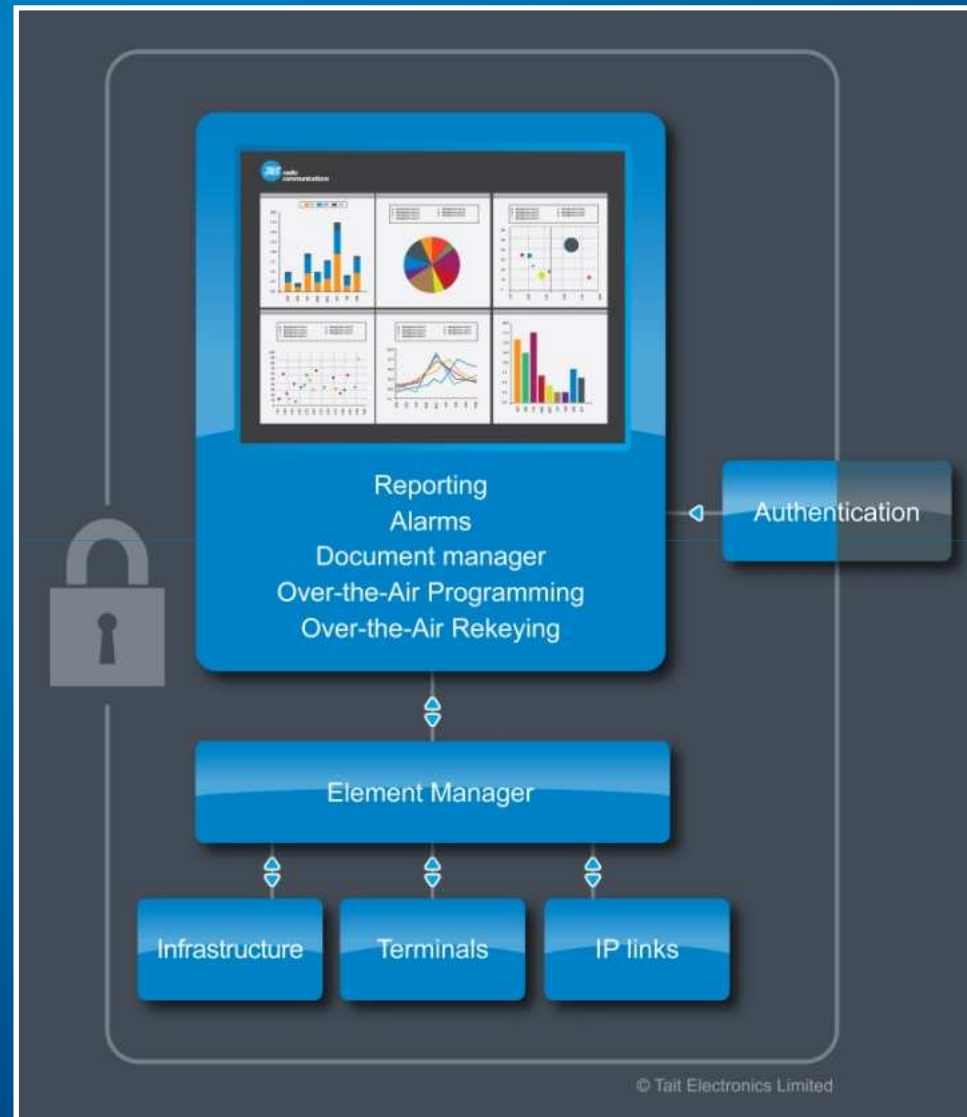
Coverage analysis

Extensive reporting

Integrated programming & key management



Tait Network Management System



Secure networks

- Network design that meets (N)CIP requirements
- Support of high-level 3DES & AES encryption for voice & data (user configurable)
- Authentication control
- Intruder detection
- Integrity control
- Ongoing support & updates to meet ongoing security objectives



Workforce communications

Scalable AVL support

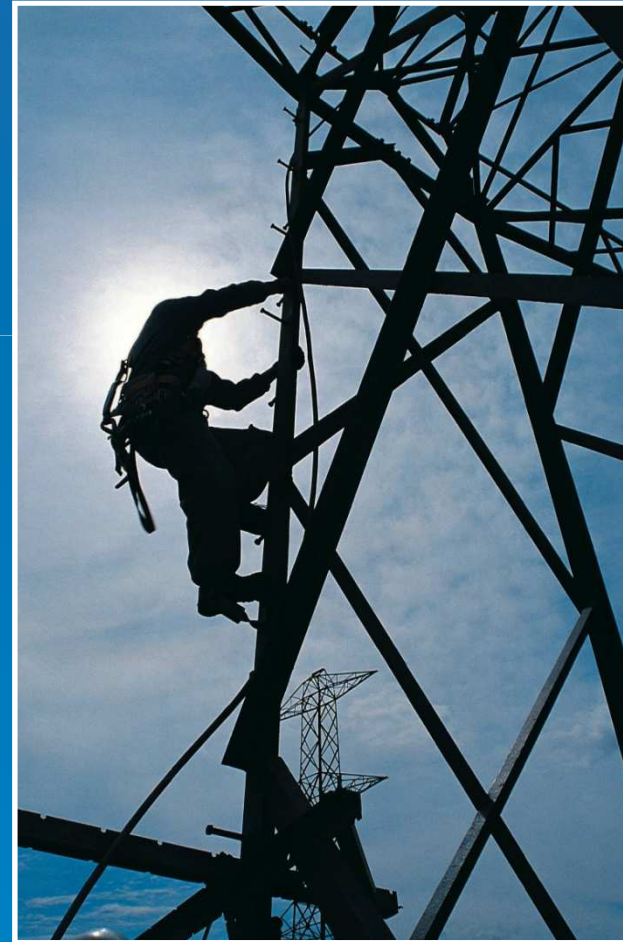
- Vehicle & person location information
- Additional vehicle information (open/close door, speed, distance)

Mobile workforce management applications

- Open application development interface
- Integration test service

Worker safety features

- Man Down
- Lone worker
- Job verifications



utilities.taitradio.com

Practical wireless communication solutions for Smart Grids

TAIT radio communications

Utilities
Practical wireless communication solutions for Smart Grids

Home Benefits Customers and Projects Utilities Solutions Events News About Tait Contact

Improve the safety and efficiency of your employees

Read about Workforce Communications Solutions »

Utilities like yours are tasked with improving your business operations, worker safety, cost structure, delivery reliability and customer satisfaction. At the same time, customers and regulators are putting pressure on to keep electricity prices low. To achieve these goals, implementing advanced Information Technology and Communication solutions will be key.

Tait has proven experience in delivering high-availability, mission critical communications to utilities. Tait is developing a new generation of digital voice and data solutions that can be deployed to enhance the safety and improve the efficiency of the workforce and Grid operation. Part of the solution is to migrate your existing network as digital technology evolves, preserving service continuity. As demands on your utility increase, Tait is your partner, offering practical, innovative solutions to achieve and improve your KPIs.

[See a list of customer projects](#) [Read more about Tait](#)

Events

9th Mar 2011 - 11th Mar 2011.
USA: IWCE 2011
Your communications network is your lifeline. It is one of the most critical parts of your organization. Make sure you're getting the most out of it by attending IWCE 2011.